

## **Bushwalk Notes – February 2021:**

Three self-guided bushwalks, starting from Dunwich Airfield, have been mapped and clearly marked with orange flagging tape.

Regular visitors to the airfield, Duncan and Kathryn Shiels, created these walks in 2011. Since then, they have continued to maintain these three walks with the help of Michael Wallace in the past and more recently Bill and Selina Coman.

To keep these walks open, a huge amount of clearing work has been undertaken, particularly in recent years, due to fire-damaged trees from the January 2014 bushfire continuing to collapse even now, five years later. Fortunately, as the new growth establishes itself and there are fewer heat and fire damaged trees falling over and fewer of these trees still standing, less clearing needs to be done.

As detailed below, following the recent clearing by forestry mulcher of the Dunwich Track, Duncan and Kathryn Shiels' clearing workload for the 3 walks has been reduced by about 80% - Yay! The track has had no attention apart from them for about 25 years since the Bayside Mine closed and this recent effort is very welcome.



### **Walks:**

**1. Cody's Walk** is a short 2km loop walk to the west of the airfield, which should take about 30 minutes, so named after Cody the dog, who always liked it. We recommend a clockwise route for this walk.

**2. Lookout Walk** is a more challenging 3.2km loop walk, also to the west of the airfield which takes you to a lookout overlooking Dunwich with Peel Island, Moreton Bay and Brisbane in the distance. This should take about 45-50 minutes. For a slightly quicker trip to the lookout and back, use the PMG track for both outbound and return legs.

**3. Dunwich Walk**, the most challenging of the three walks, is a 4km walk into town - and 4km return. This walk takes about 55-60 minutes into Dunwich and 55-60 minutes back to the airfield. The track route, turnoffs and detours are marked with orange flagging tape.

The section of track (**the Dunwich Track**) has now been recently cleared by a forestry mulcher to a width of 3 - 4 metres the whole way down to the security gate.

N.B. For all you 4WD hopefuls, the track is not cleared to the bitumen road and you



will not be able to access the new cleared track from this end as the forest mulching was stopped just before the security gate(see picture) and can only be accessed by walkers or trail bikes(with care) via the access track around the end of the fence(see picture). In other words, while this track is 4WD capable, it is a No Through Road for 4WDs.



Have morning tea or lunch in Dunwich at the Bakery. At the rear of the SPAR, the formerly Skip's kitchen is still open for excellent burgers and chips. Unfortunately, the tables and chairs have been removed due to the restrictions, so you will need to find somewhere else to eat your burger.

If you are out early, an excellent breakfast idea is the Fruit Barn Café for your Bacon & Eggs Breakfast or Smashed Avocado on Toast.

Toilets are down the slope next to the football club. Water bottles can be refilled here. There is also a tap under the Big Tree.



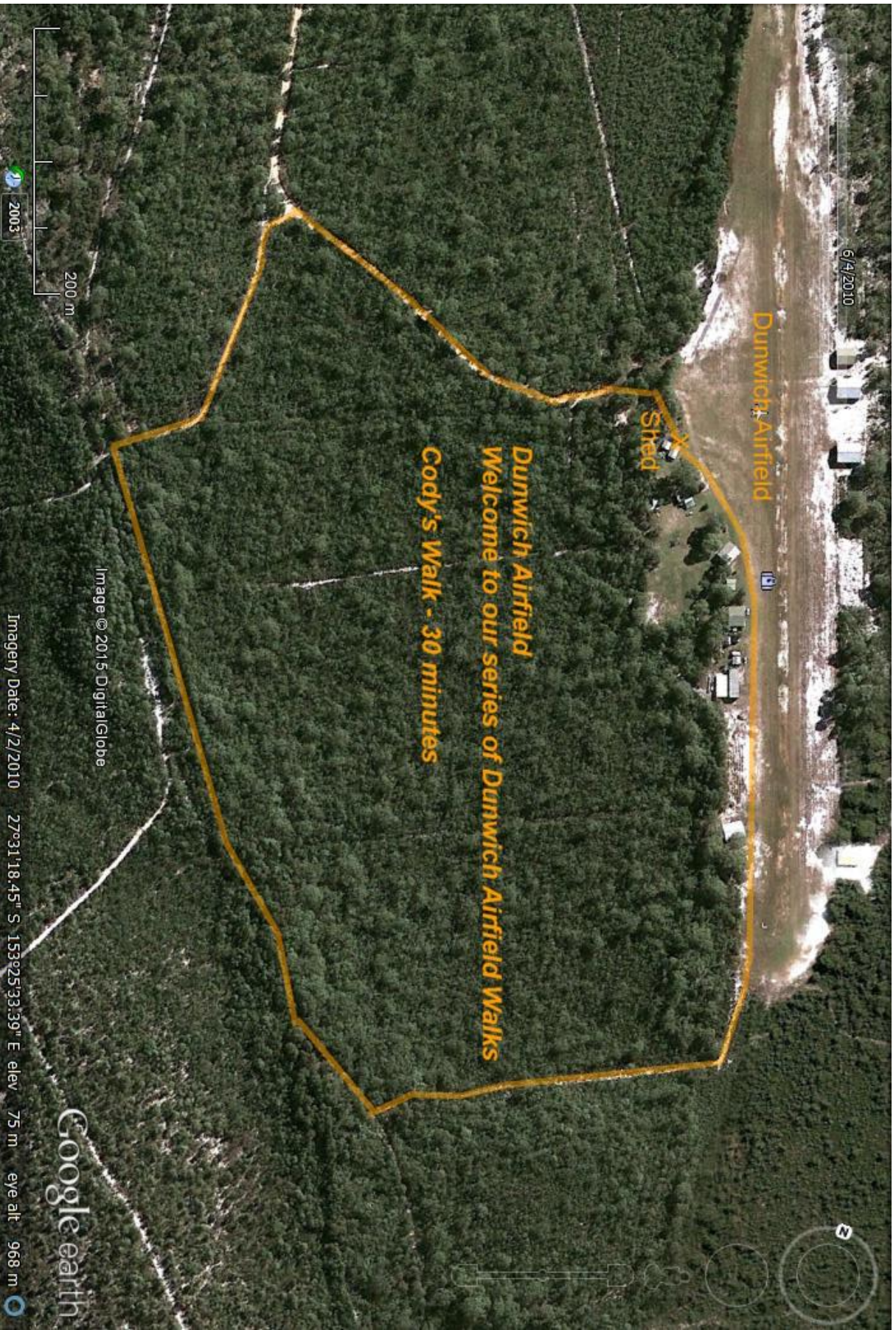
*For the Dunwich Walk in particular, especially during the hotter months, we recommend that you consider bringing a change of clothes, towel, soap etc. and having a shower at the clubhouse when you return.*

*N.B. For the arachnophobics, there will be spiders and spider webs on the Lookout and Dunwich Walks but don't worry - they are only large and quite friendly!*

So why not stretch your legs after your flight with some fresh sea air and exercise?

© Duncan Shiels 2021





6/4/2010

Dunwich Airfield

Shed

**Dunwich Airfield**  
**Welcome to our series of Dunwich Airfield Walks**  
**Cody's Walk - 30 minutes**

Image © 2015 DigitalGlobe

Imagery Date: 4/2/2010

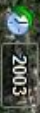
27°31'18.45" S 153°25'33.39" E elev

75 m

eye alt

968 m

Google earth



200.3

200 m







6/4/2010

Dunwich Airfield

PMG Track

Shed X

Dunwich Airfield Walks  
Welcome to our series of Dunwich Airfield Walks  
Walk to Lookout - 50 minutes

Dunwich Track

Lookout X

302 m

2003

Image © 2015 DigitalGlobe

Imagery Date: 7/16/2009

27°31'03.06" S 153°25'18.95" E elev 81 m

eye alt 1.28 km

Google earth



6/4/2010

### Dunwich Airfield Walks

Welcome to our series of Dunwich Airfield Walks

Walk to Dunwich - 55 minutes (and 55 minutes return)

X Walk on embankment around the new security fence and gate.

X Track is boggy here and should be avoided after heavy rain

Dunwich Track

Lookout X

PMG Track

Dunwich Airfield

Shed X

X Dunwich Shops

601 m

2003

Image © 2015 DigitalGlobe

Imagery Date: 6/4/2010

27°30'35.85" S 153°24'59.13" E elev 79 m

eye alt 2.64 km

Google earth

